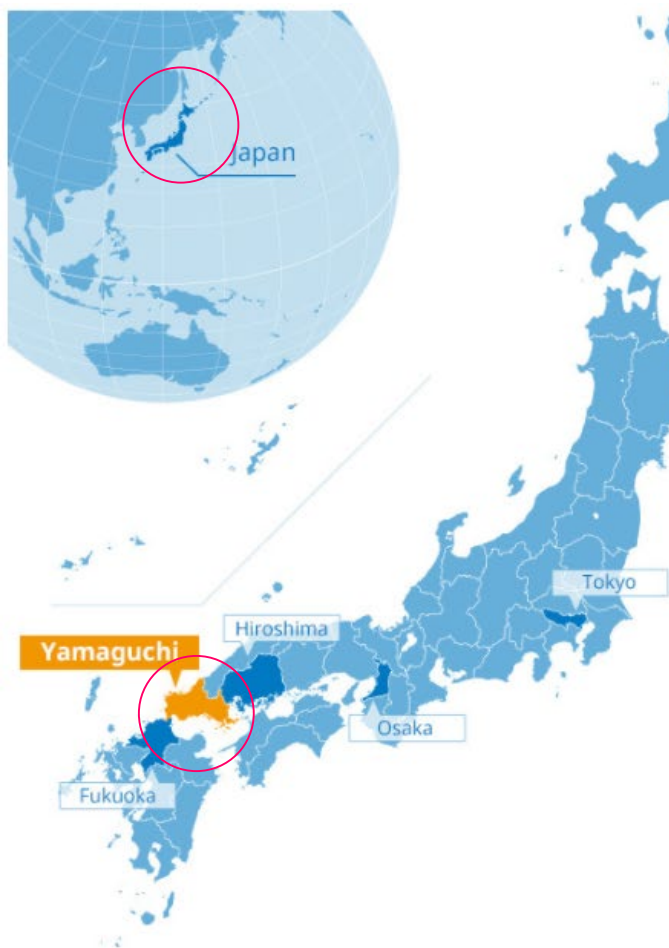




The Challenge of Yamaguchi University for the Global accreditation

Joint Faculty of Veterinary Medicine
Yamaguchi University
Prof. SATO Koichi, Dean

Brief introduction of Yamaguchi University



Transportation access to Yamaguchi

From Tokyo

Shinkansen	4hrs. 30min.	Tokyo Stn. → Shin-Yamaguchi Stn.
Airplane	1hr. 30min.	Tokyo Int'l Airport → Yamaguchi-Ube Airport

From Osaka

Shinkansen	2 hrs.	Shin-Osaka Stn. → Shin-Yamaguchi Stn.
------------	--------	---------------------------------------

From Hiroshima

Shinkansen	30 min.	Hiroshima Stn. → Shin-Yamaguchi Stn.
------------	---------	--------------------------------------

From Fukuoka

Shinkansen	40 min.	Hakata Stn. → Shin-Yamaguchi Stn.
------------	---------	-----------------------------------



Yamaguchi

Land Area: 6,112 km²
Population: 1.39 million



YAMAGUCHI
UNIVERSITY



Faculties	9
Graduate Schools	8
Students	10,000
International Students	400



Why did we decide to get EA EVE accreditation?

History of Japanese Veterinary Education

1949 Veterinary education was established as 4-year universities

Yamaguchi University established Department of Veterinary Medicine at Faculty of Agriculture

1983 6-year veterinary education & 4-year doctoral course were started

Doctoral Courses were available at :Hokkaido Univ., Tokyo Univ., and Osaka Prefectural Univ.

1990 United Graduate Schools were established

The United Graduate School of Yamaguchi University and Gifu University

2004 Veterinary educational reform started (Season III)

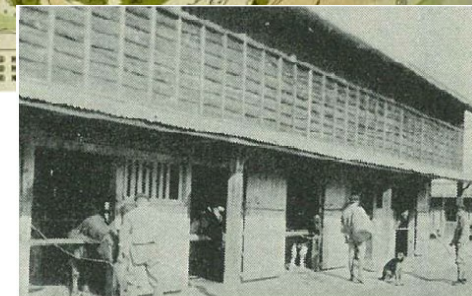
Goals : more than 72 Professors at each VEE

2011 MEXT published the veterinary educational improvement plan

Five pillars for Veterinary Education Improvement

2012 Joint Faculty of Veterinary Medicine
(Yamaguchi University and Kagoshima University)

With 84 professors
Goal: EA EVE Approval

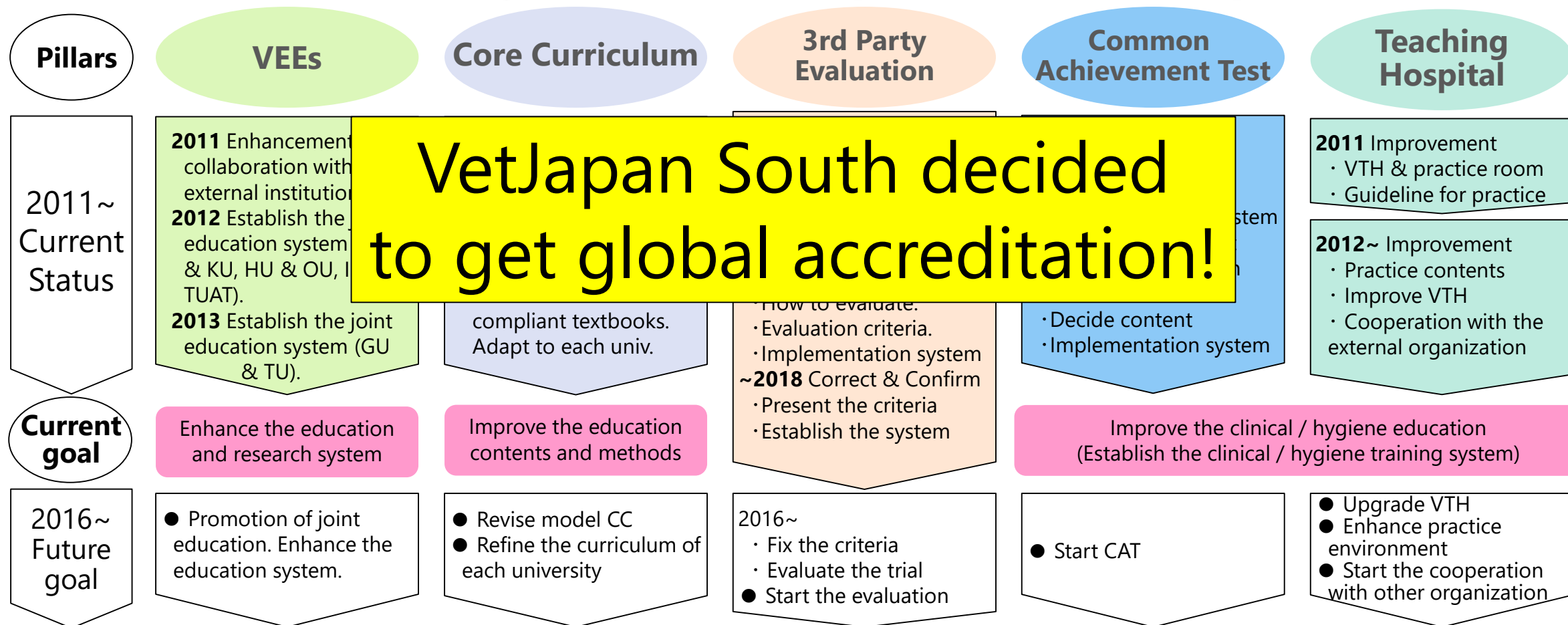


家畜舎 (『山口農業高等学校100年史』より)



Why did we decide to try international accreditation?

Five Pillars for Veterinary Education Improvement in Japan (ver. 2012)



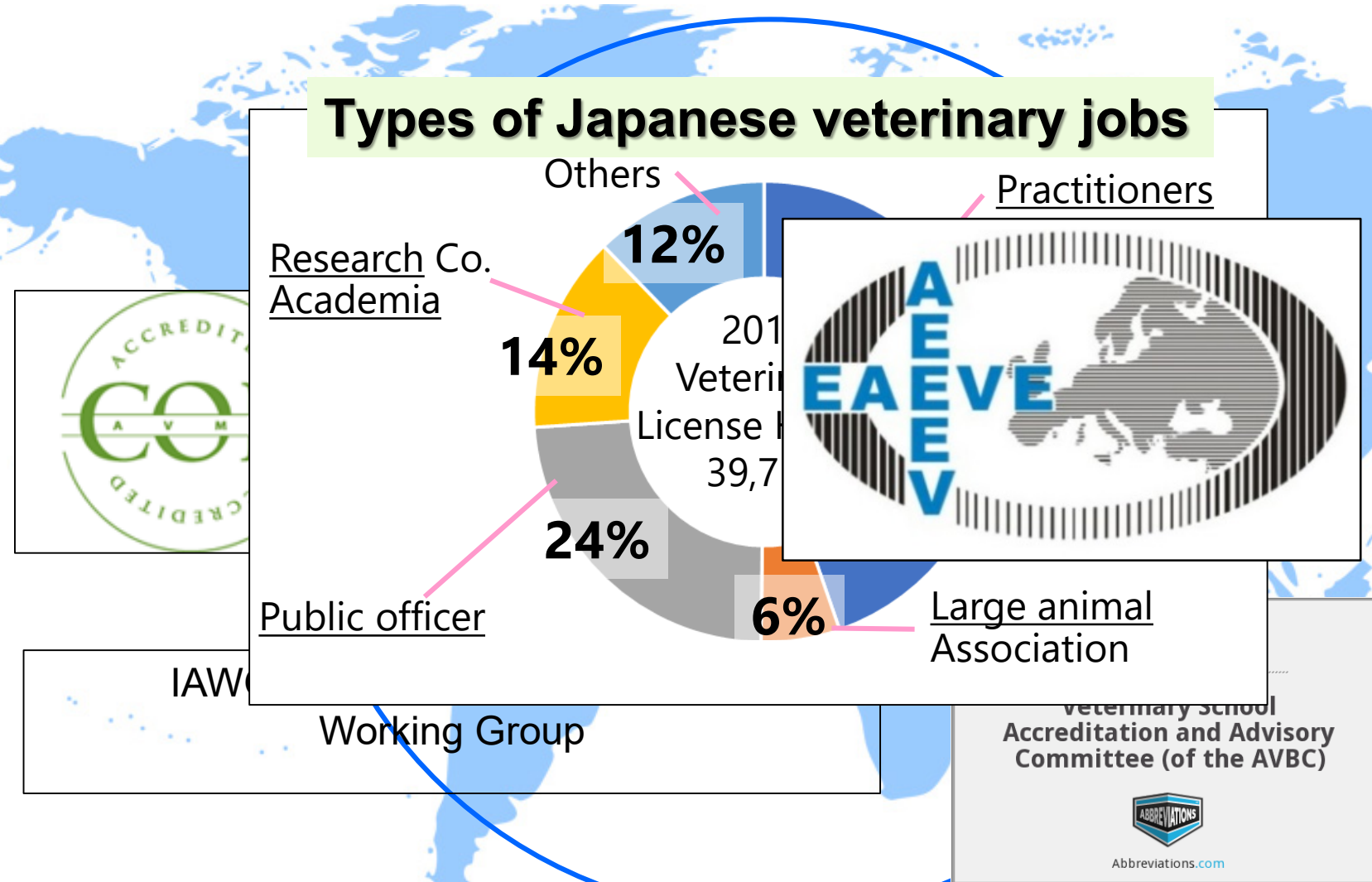
VetJapan South decided to get global accreditation!

Enrichment of Veterinary Education / Establishment of QA system

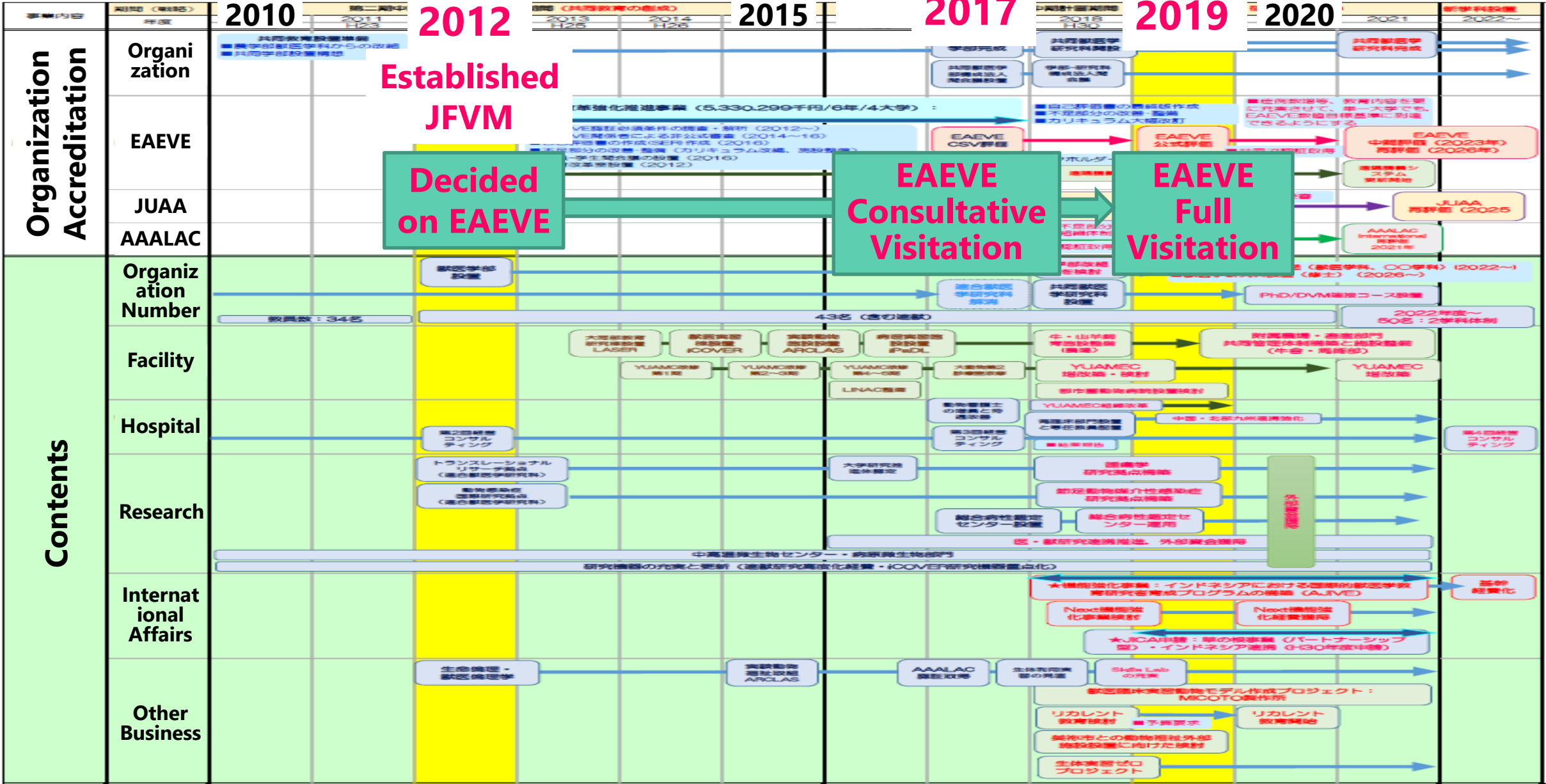
Goal: Provide the global standard veterinary education

Why did we decide on EAEVE?

Global evaluation systems

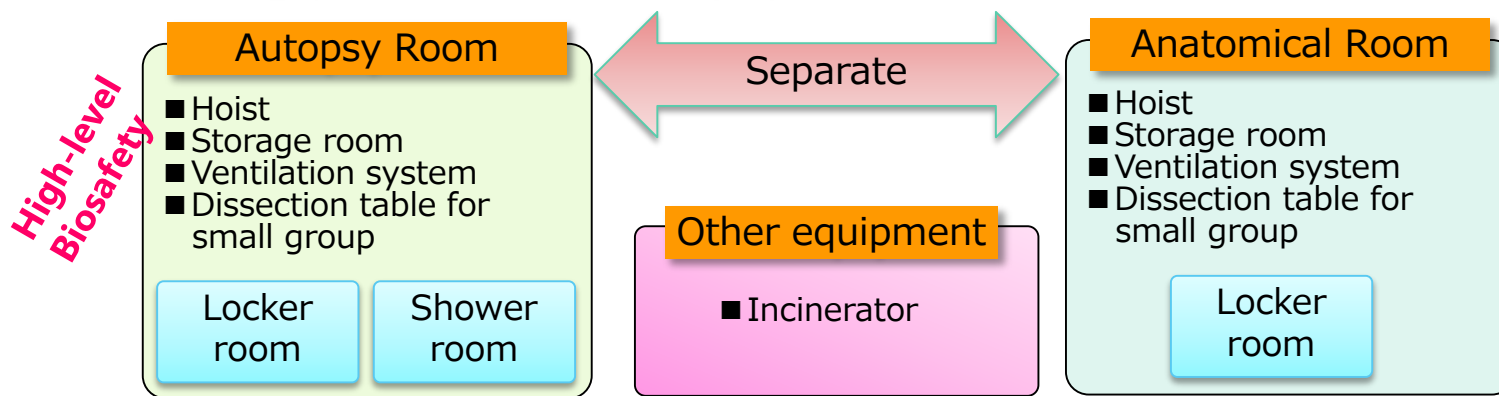


Road map for EAEVE accreditation



Pathology & Anatomy practice

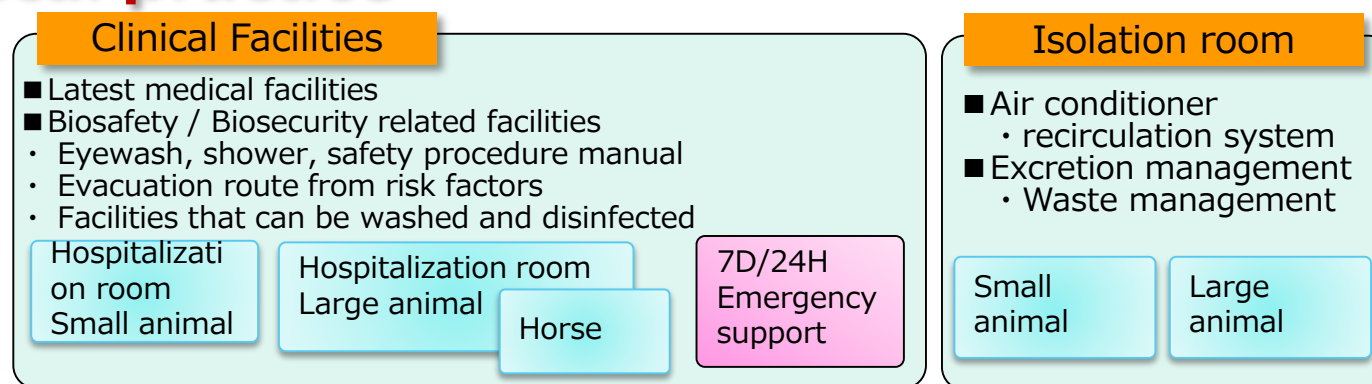
All information is from EA EVE SOP 2016.



Required education style

- Less than ten students per group
- Hands-on practice (not bystander)
- Numbers (per one class/30 students)
 - Large animal : ≥ 32
 - Chicken : ≥ 18
 - Small animal : ≥ 48

Clinical practice



Required education style

- Less than ten students per group
- Hands-on practice (not bystander)
- Numbers (per one class/30 students)
 - Large animal : ≥ 280
 - Horse : ≥ 81
 - Small animal : $\geq 1,400$
 - Herd health : ≥ 10



Required six species for practical training:
Depend on local demand.



Major revision of the clinical training curriculum

2012

Clinical Clerks (Polikli)

3

Small animals 2

Large animals 1

Credit
(Week)

Lecture for Clinical Practice

3

Infectious
disease 1

Bovine disease
1

Basic clinical
practice 1

Specialized Subjects

Special lecture
4

Special practice
2

Special course seminar
4

Graduation thesis
6

16

Strengthening
Clinical training

2021

Clinical Clerks (Polikli)

Small animal
11

Large animal
6

Emergency
2

Autopsy
1

20

Specialized Subjects

Special course seminar
2

Graduation thesis
4

6

VetJapan South



Self Evaluation Report 2019

EAEVE European Association of Establishments
for Veterinary Education

Full Visitation 9-14/June/2019

TABLE OF CONTENTS

Introduction	1
1. Objectives and Organisation	4
2. Finances	13
3. Curriculum	18
4. Facilities and Equipment	30
5. Animals Resources and Teaching Material of Animal Origin.....	38
6. Learning Resources.....	47
7. Student Admission, Progression and Welfare.....	50
8. Student Assessment.....	56
9. Academic and Support Staff	58
10. Research Programmes, Continuing and Postgraduate Education.....	62
11. Outcome Assessment and Quality Assurance.....	66
12. ESEVT Indicators.....	69
Glossary	71
List of appendices	72



■ Date: 2019/6/9~14 (YU, 9~11; KU, 12~14)

■ Experts: 8 specialists

Prof. Antti SUKURA (Helsinki, Finland)

Prof. Juan Alberto CORBERA (Canaria, Spain)

Prof. Monica CUTRIGNELLI (Naples, Italy)

Dr. Daniel J Connolly (Veterinary Clinic, Gort, Ireland)

Dr. Robert HUEY (Belfast, Northern Ireland): [Chairperson](#)

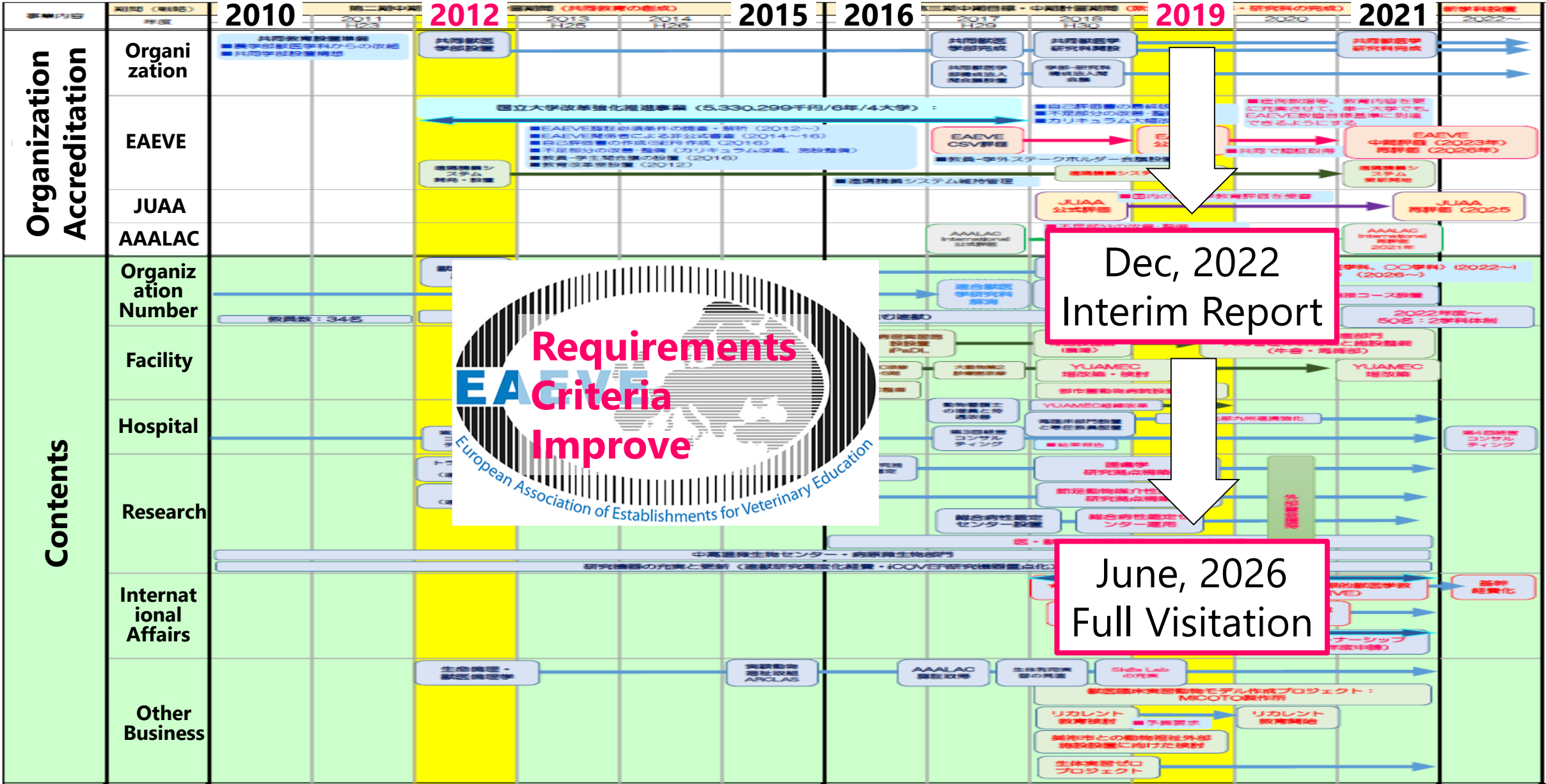
Dr. Werner SWANNET (Ghent University, Belgium)

Ms. Victoria DRAUCH (Vienna, Austria)

Prof. Pierre LEKEUX (Liège, Belgium): [Coordinator](#)



Future schedule for EA EVE accreditation





- Keep the faculty staff number
- Maintain the facility level
- Heavy burden for clinical staff
- Always improve veterinary education
- Need budget



- No direct benefit (EU vet license)
- Students receive good education
- T&S think vet education deeply
- Strategy becomes clear
- Use for various grant application