



FAO Reference Center for Antimicrobial resistance

Faculty of Veterinary Science, Chulalongkorn University
Bangkok, Thailand

By Rungtip Chuanchuen DVM MS PhD



Faculty of Veterinary Sciences, Chulalongkorn University



- 133 Instructors
- 747 DVM
- 18 Graduate diploma program
- 74 MS program
- 139 PhD program



Department

- Departments of Veterinary Anatomy
- Departments of Veterinary Physiology
- Departments of Animal Husbandry
- Departments of Veterinary Pharmacology
- Departments of Veterinary Pathology
- Departments of Veterinary Surgery
- Departments of Veterinary Medicine
- Departments of Veterinary Obstetrics, Gynaecology and Reproduction
- Departments of Veterinary Public Health
- Departments of Veterinary Microbiology

Center of Excellence (CE)

- Center of Excellence Emerging and Re-emerging Infectious Diseases in Animals

Research Unit (RU)

- Obstetrics and Reproduction in Animals Research Unit
- Ornamental Aquatic Animals and Aquatic Animal for Conservation Research Unit
- Avian Health Research Unit
- Reproductive Biotechnological Science Research Unit
- Companion Animal Cancer Research Unit
- Research Unit in Microbial Food Safety and Antimicrobial Resistance
- Swine reproduction research unit
- Wildlife, Exotic and Aquatic Pathology
- Diagnosis and monitoring of animal pathogens
- Fish Infectious Diseases (FIDs)
- Feline Health and Infectious Disease Research Unit for Excellence
- Food Risk Hub Research Group

Special Task Force for Activating Research (STAR)

- Animal Vector-Borne Disease Research Group
- Epidemiology and Animal Health Economics Research Group
- Research Study and Testing of Drug's Effect Related to Cardiovascular System in Laboratory Animal
- Swine Viral Evolution and Vaccine Research Group
- Biology of Embryo and Stem Cell Research in Veterinary Science
- Increasing Milk Production in Daily Goat Fed under Hot and Humid Environmental Condition in Thailand
- Veterinary Parasitology Research Group

Chulalongkorn University AMR Cluster (CU VET AMR)

Department of Veterinary Public Health



1. Center for Antimicrobial Resistance Monitoring in Foodborne Pathogen (in cooperation with WHO) (**CUARM**)
2. Research Unit in Food Safety and Antimicrobial Resistance (**CUFSAR**)
3. WHO Global Foodborne Infections Network: SE Asia & Western Pacific
4. FAO Reference Center for Antimicrobial Resistance

Chulalongkorn University AMR Cluster (CU VET AMR)

Department of Veterinary Public Health

1

ARM-Asia was established.

1999

2

Accepted to be **WHO-Sal Suv.**

2000

Renamed to be **WHO-GFN**

2009

3

ARM-Asia was changed to **CUARM**.
CUFSAR was established.

2014

4

Designated as **FAO REF Center for AMR**

2018



2018

FAO Reference Center for Antimicrobial Resistance

Designated in November 2018

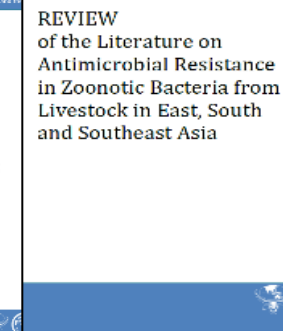
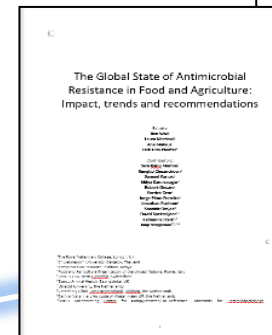


Collaborations with FAO since 2013

Southeast Asia

South Asia & Pacific

2013



2014

2016



2017



2019



ASSESSMENT TOOL for LABORATORIES and AMR SURVEILLANCE SYSTEMS (ATLASS)

- Cambodia, June 2016
- Thailand, March 2017
- Indonesia, March 2017
- Vietnam, April 2017
- Lao PDR, May 2017
- Myanmar, March 2017
- Philippines, December 2017
- Cambodia, December 2017
- Singapore, May 2018
- Vietnam, July 2018
- Indonesia, November 2018
- Maldives, March 2019
- Papua New Guinea 2019
- Sri Lanka 2019
- Bhutan 2019
- Malaysia 2019

2021




AMR laboratory capacity building in animal sector in South East and South Asia



➔ This questionnaire is to be filled for each individual laboratory evaluated

FAO-ATLASS - LMT-AMR

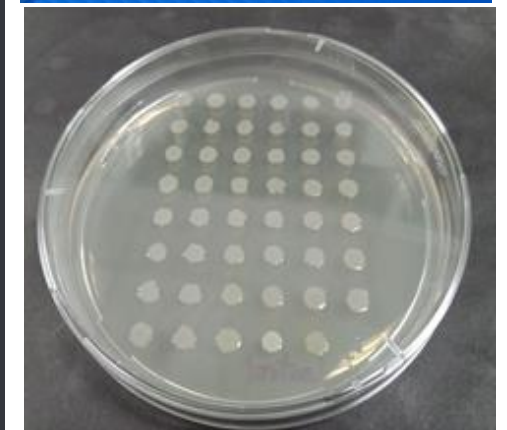
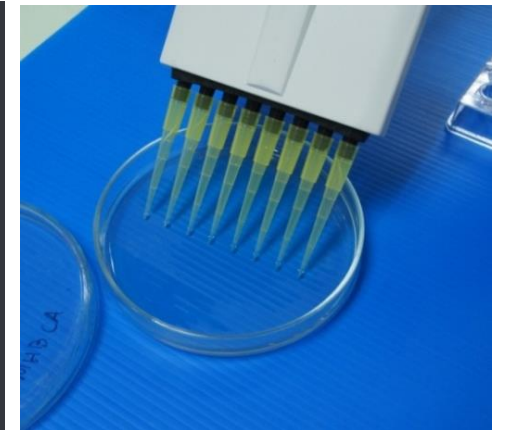
Laboratory acronym: **Lab X**  Please make sure further information on this laboratory has been filled in the spreadsheets

A: Date assessment	dd/mm/yyyy	Name assessor A:	Assessor's affiliation:
B: Date assessment	dd/mm/yyyy	Name assessor B:	Assessor's affiliation:
C: Date current assessment	dd/mm/yyyy	Name assessor C:	Assessor's affiliation:

Name of persons interviewed:
Assessment A:
Assessment B:
Current assessment C:

SELECT ONLY 1 OPTION per row THAT BEST DESCRIBES THE SITUATION and complete "Assessments Scores" for assessment C (Current assessment) scoring either 4,3,2 or 1, or 0. If situation stands between two scores, please select one score and describe the reason for hesitation in the column for comments(column K). In case a given score is +/- 2 or 3, provide a comment(column K).

Sub Category	4	3	2	1	A
3.0.Lab Info	3.1.Lab Quest	3.2.LMT	4.1.Compilation Lab	4.2.LMT Summary	4. ...





AMR laboratory assessment



USAID
FROM THE AMERICAN PEOPLE



Food and Agriculture
Organization of the
United Nations



VIETNAM



AMR laboratory assessment



USAID
FROM THE AMERICAN PEOPLE



Food and Agriculture
Organization of the
United Nations





CLINICAL AND
LABORATORY
STANDARDS
INSTITUTE®



FAO-APHCA-DLD ASEAN Regional Training Workshop on “Antimicrobial Susceptibility Testing of Bacteria Isolated from Farm Animals”

CU VET, Thailand 7-8 October 2014



Food and Agriculture
Organization of the
United Nations



Hands-on Training on standard antimicrobial
susceptibility testing (AST) in bacteria
associated with food animals and meat
products
*BPMSPPH, Bogor, Indonesia,
11-13 December 2018*



Food and Agriculture
Organization of the
United Nations



170220849



phonesavanh



khamma Nammonuty



Pattrarat Chanchaithong



User



Rungtip Chuanchuen



Advice



bounmyb...



phounsavanh

**Sample collection, packaging
and transport**

Rungtip Chuanchuen
DVM MS PhD

COVET AMR
CHULALONGKORN UNIVERSITY

- Research Unit in Microbial Food Safety & Antimicrobial Resistance;
- Center for Antimicrobial Resistance Monitoring in Foodborne Pathogens (in cooperation with WHO)
- Global Infections Network, Southeast Asia and Western Pacific
- FAO reference center for AMR

Department of Veterinary Public Health, Faculty of Veterinary Sciences, Chulalongkorn University

National Consultation Meeting on ATCLASS Mission Findings and Training on Sample
Collection and Handling for Bacterial Isolation in AMR Monitoring in Lao PDR

Video conference, 10 April 2020

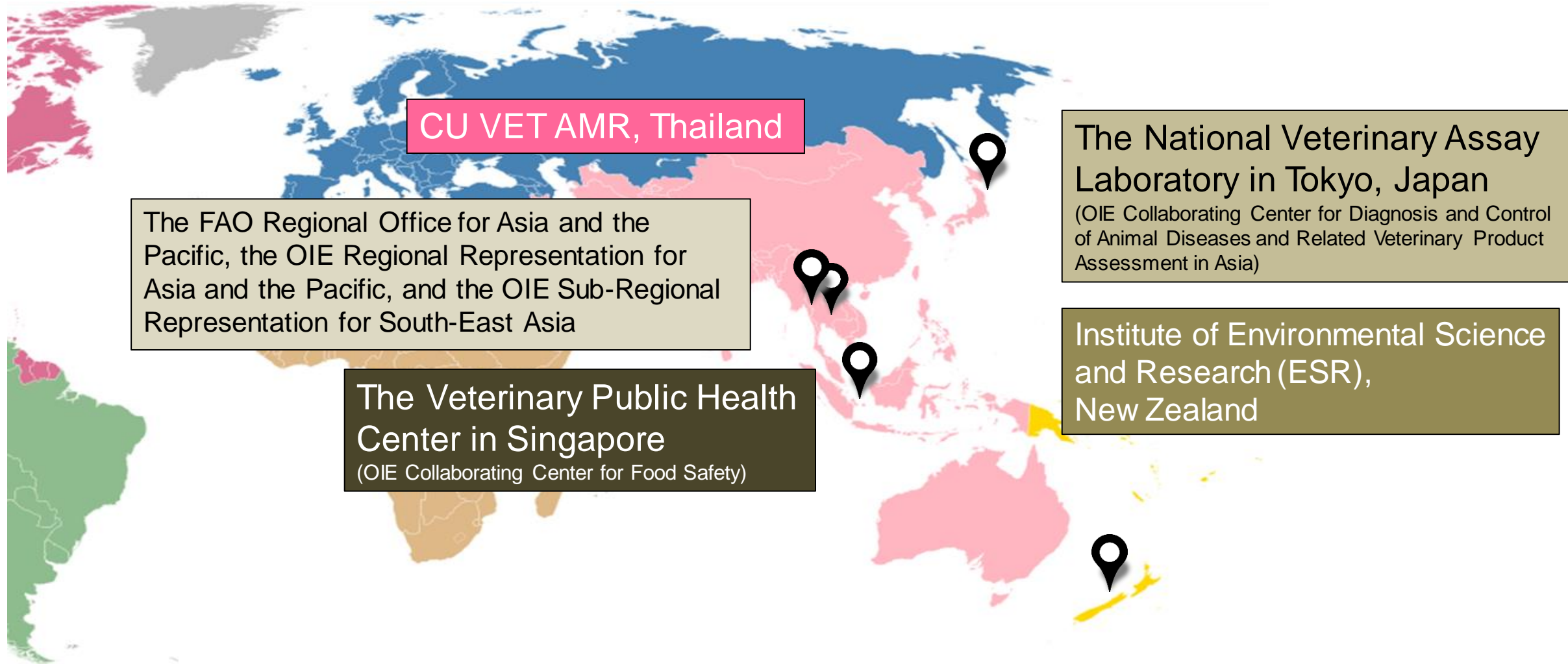
Regional Antimicrobial Resistance Monitoring and Surveillance Guidelines

Monitoring and surveillance of antimicrobial resistance in bacteria from healthy food animals intended for consumption



Network of Regional Reference and Collaborating Centers on AMR in Asia and the Pacific

established in November 2018



CUVET Impact on CUVET



1

Knowledge application at regional and global level

2

Stages for outside classroom learning and experience for faculty and students at international level.

3

Extensive scientific and technical networks, broaden partnerships and collaborations with other national, regional and international organizations

4

Regional and international acknowledgement and a well-known reputation at international level.

5

etc



Manpower (staff)



Time allocation



Logistics (Distance/travel)



Requirement & implementation
needed for different countries



Unexpected circumstances

Thank you



vetcufsar@gmail.com

