



AAVS-OIE-UGM Session during ICAVESS on Collaboration
between veterinary education establishments and
international organizations in Asia
March 29 (Mon), 2021



Experience sharing by AAVS Members

An introduction to our collaboration with OIE



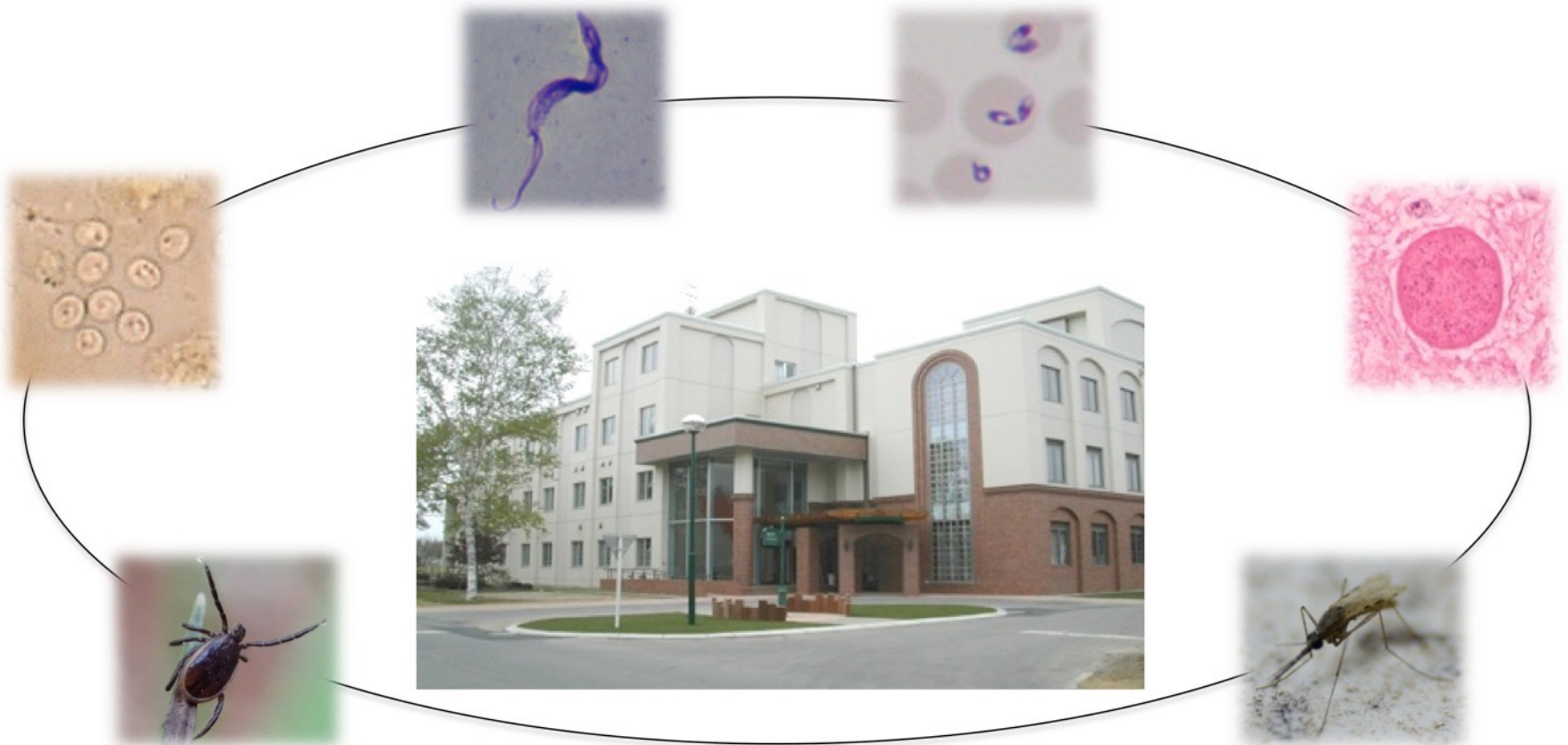
Naoaki Yokoyama

National Research Center for Protozoan Diseases,
Obihiro University of Agriculture and Veterinary Medicine,
Obihiro, Japan



National Research Center for Protozoan Diseases (NRCPD)

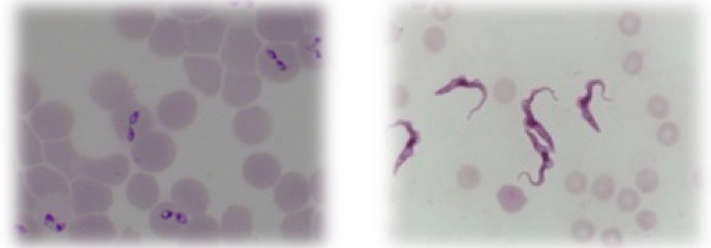
- International Collaborating Research Center specializing in protozoan disease research (reorganized in 2000)
- 73 members, including 10 faculty (half of them are foreigners)
- Engaged in veterinary undergraduate and graduate education
- Produced over 350 alumni (world-wide network)



How **NRCPD** has become involved in collaboration with **OIE** ?

2007 OIE designated three **reference laboratories** and officially recognized two experts leading them.

- **Bovine babesiosis**: Prof. Ikuo Igarashi
- **Equine piroplasmosis**: Prof. Ikuo Igarashi
- **Surra**: Prof. Noboru Inoue



2008 NRCPD was designated as the only **OIE collaborating centre** specializing in “animal protozoan diseases” in the world.

NRCPD : OIE Collaborating Centre for Surveillance and Control of Animal Protozoan Diseases

2017 NRCPD obtained **ISO/IEC 17025** standard for the diagnosis of the abovementioned protozoan diseases.

< NRCPD currently hosts four OIE Reference Centres. >

- OIE Collaborating Centre “**Surveillance and Control of Animal Protozoan Diseases**”
- OIE Reference Laboratory “**Bovine babesiosis**” (Yokoyama)
- OIE Reference Laboratory “**Equine piroplasmosis**” (Yokoyama)
- OIE Reference Laboratory “**Surra**” (Inoue)



Main activities of OIE Reference Laboratories (1)

(Bovine babesiosis, Equine piroplamosis, and Surra)

1) Collaboration with OIE

- Participation in international OIE conferences and network
- Collaboration with other OIE accredited facilities
- Revision of OIE terrestrial manuals, animal health codes, and case definition
- Submission of annual activity report, etc.

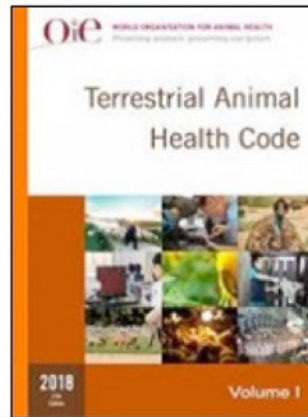
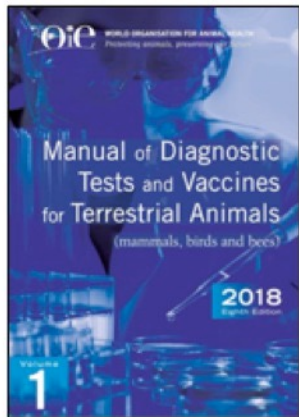
2) Raising awareness of animal protozoan diseases

- Holding international academic seminars on the designated protozoan diseases and OIE activities

Direct contribution to OIE

Manual of Diagnostic Tests and Vaccines for Terrestrial Animals 2019

<https://www.oie.int/en/standard-setting/terrestrial-manual/access-online/>



Terrestrial Animal Health Code (2019)

<https://www.oie.int/en/standard-setting/terrestrial-code/access-online/>

Reports of the Reference Laboratories (2019)

<https://www.oie.int/en/scientific-expertise/reference-laboratories/annual-reports/>

Academic seminars abroad



Hue University,
Vietnam, 2019



Chiang Mai University,
Thailand, 2020

Main activities of OIE Reference Laboratories (2)

(Bovine babesiosis, Equine piroplamosis, and Surra)

3) Strengthening diagnostic capabilities of laboratories around the world

Internships, expert advise, graduate and postgraduate training, seminar and workshop on diagnosis of animal protozoan diseases, etc.

4) Diagnostic services

Provision of diagnostic services and OIE-recommended diagnostic materials, etc.

Internships



Dr. ThankGod E. Onyche
(Nigeria) 2019

“Equine piroplamosis in Nigeria”



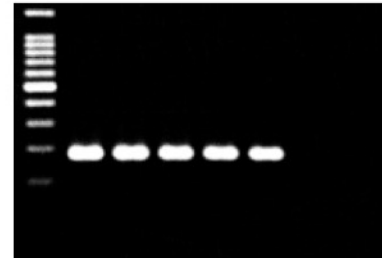
Ms. Erandi Gunasekara
(Sri Lanka) 2017

“Bovine babesiosis in Sri Lanka”

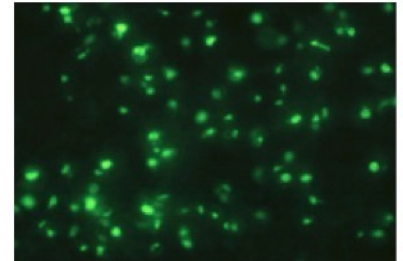
Thailand, Vietnam, Mongolia, Kyrgyzstan, etc.

Diagnostic services

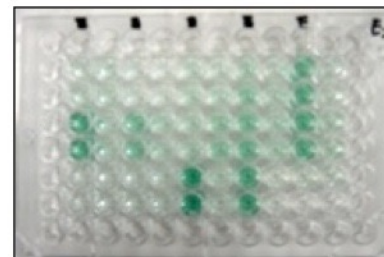
PCR



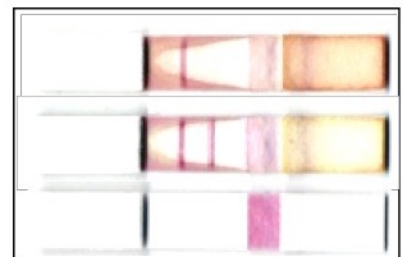
IFAT



ELISA



ICT



New Zealand, Australia, China, United Kingdom, Germany, etc.

Main activities of OIE Reference Laboratories (3)

(Bovine babesiosis, Equine piroplamosis, and Surra)

5) Collect, process, and disseminate epizootiological data

Disease surveillance on a global-scale in collaboration with local institutes in endemic countries, risk factor analysis, improve the diagnostic capabilities in the member countries, preparation of guidelines for surveillance and control, etc.

6) Education in our university

Graduate and postgraduate students, JICA trainees, interns, short-term trainees, etc.



Vietnam

Global Epidemiological Survey



Mongolia



Sri Lanka



Philippines



Thailand

Positive impacts of OIE collaboration on NRCPD (1)

For faculty members

1) International recognition

→ NRCPD and its faculty members gained international recognition for their research and services to OIE member countries.

2) Services to the international community

→ The requests for diagnostic services and materials from international community drastically increased in the recent past.

→ Our experts were able to provide consultancy services to foreign governments and top government agencies.

3) Perfect platform for sharing scientific information and knowledge

→ The activities, such as revision of OIE terrestrial manuals and animal health codes, allowed the faculty members to share the knowledge and scientific information with a wider international community.



Positive impacts of OIE collaboration on NRCPD (2)

For students

1) Lectures / seminars

→ Understanding the role and activities of OIE.

2) Information provided by experts

→ Staying up to date with international animal health regulations.

3) Exchange and internship programs

→ Improving intercultural communication skills and expansion of professional networks.

4) Supporting the activities of OIE Reference Laboratories

→ Gaining experience and opportunity to get involved in services provided to international community.



OIE seminar



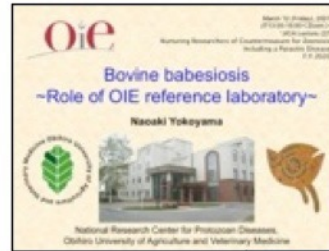
Internship presentation

We are training specialists who can play a critical role in the control of protozoan diseases.

Opportunities at our OIE Reference Laboratories

For all Veterinary Education Establishments in OIE member countries

Provision of expertise in academic seminars and lectures



Internship, short-term training, and postgraduate programs



Expert advise on diagnosis, surveillance, and control

International research collaboration

Control of protozoan diseases

Naoaki Yokoyama



OIE expert for equine piroplasmosis and bovine babesiosis

Noboru Inoue



OIE expert for Surra

